



COLOR LENS



PRODUCT SPECIFICATION

MiraArt Silicone Hydrogel Color Daily Disposable Soft Contact Lenses

Sphere Powers (D) 0.00D ~ -6.00D (0.25D steps), -6.50D ~ -10.00D (0.50D steps)

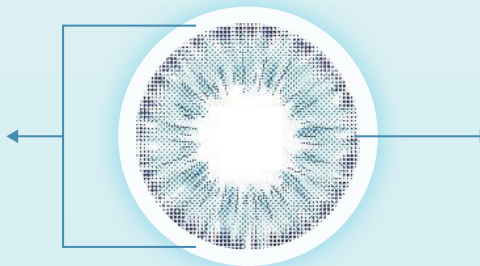
Central Thickness	0.07mm @ -3.00D	Material	Unifilcon A
Water Content	44%	Base Curve	8.8mm ± 0.2mm
Diameter	14.2 mm ± 0.2mm	Dk/t	86 (@ -3.00D)

Brilliantly
Healthy

Beautifully
Colored

Effortlessly
Comfortable

**Customizable
Graphic Diameter**
From 11.9mm to 13.4mm

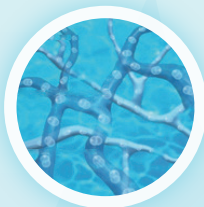


Dot Matrix Design

Enhances the eye's natural beauty while retaining performance

Silicone Hydrogel Material

Offering superior breathability for a vibrant and healthy look



**Ultra Soft Touch
Extremely Low Modulus**

Ultra-low modulus of 0.37 MPa :
Soft, flexible, and tear-resistant for ultimate comfort

COLOR LENS

1 TONE	 Ebony Crown	 Chestnut Regal	 Glowy Grey	 Glowy Brown	 Green	 Walnut	 Blue
2 TONE	 Mocha Majesty	 Slate Shadow	 Golden Duo	 Creamy Delight	 Ash Crown	 Latte Glow	 Vibe Olive
3 TONE	 Trio Blue	 Stella Olive	 Glint Grey	 Twilight Dark Brown	 Trio Yellow	 Stella Blue	 Purple